

AIXPI

10" LED Ring Light Instructions



Model:L218 V.1

Dear Customer:

Thank you for purchasing our products. If you need any help, please feel free to contact us at our customer service email:

support@aixpi.com

The ring light from AIXPI were addressed 30-day full money refund policy and 12-month quality guarantee.



Precautions for use

- ❗ No battery, No charging.
- ❗ Please chose reputable brand, certificate compliant DC 5V adapter.
It is better to choose a 12w or larger adaptor to power the ring light.
If the adaptor power is smaller than 12w, it may happens over heating protection to cut off the ring light automatically.
- 2.The slight noise is unavoidable, if you chose power bank to drive the ring light.
- 3. Ta: -20°C ~ 50 °C
- 4. IP20, Never use it in damp environment, such as in the rain, in the bathroom etc.



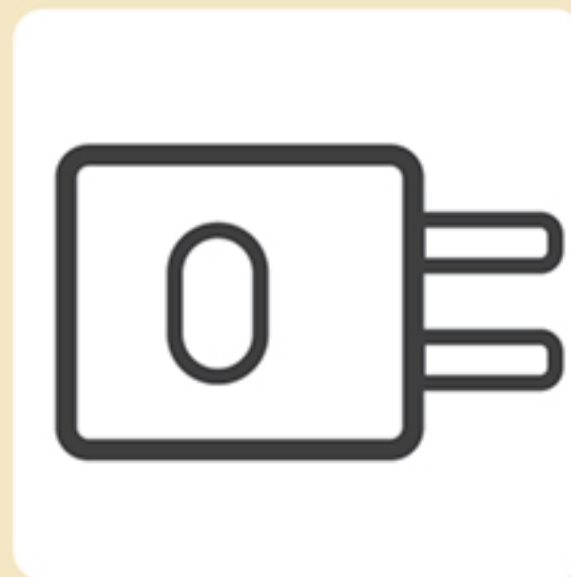
USB Powered



Desktop PC



Notebook



USB Charger



Mobile Power

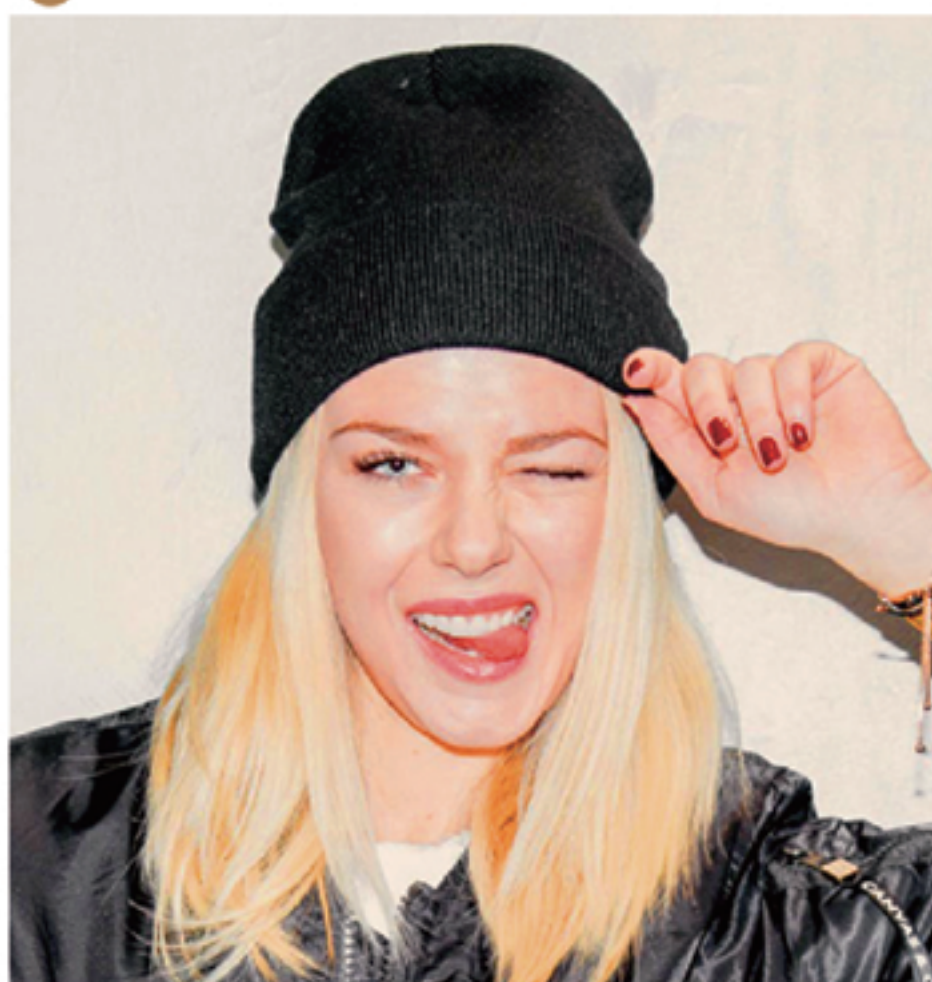
Basic Operation

Warm light/Cold light
Conversion

On/Off



3 Color Temperature & 10 Brightness



Product List



① Ring light



② Tripod



③ Pan-Tilt



⑤ Mobile phone clip

Installation Instructions



1.Prepare ② Tripod, and Turn the screw counterclockwise to loosen the screw.



2.Use both hands to divide the corner frame into two sides.



3.Turn the screw clockwise to secure the tripod.



4.Pull the holder up first.



5.Then rotate the holder to fixed it.



6.Adjust height according to demand.
Tripod assembly completed.



7.Prepare ④Pan-Tilt and ⑤Mobile phone clip.



8.Install the ⑤Mobile phone clip on the ④Pan-Tilt tighten it as shown in the direction of the arrow.



9.Loosen the bottom screw and have a certain gap for easy installation on the ring light.



10.Mount the assembled mobile phone holder on the ring of the ring light.



11.As shown in the figure, press the clamp with your finger and rotate until tightened.



12.Mobile phone bracket installation completed.



13.Install the ③Pan-Tilt on the ring lamp and rotate until tightened.



14. ③Pan-Tilt and ring light assembly completed.



15.Install the ③Pan-Tilt on the tripod and rotate until tightened.



16.Put the cell phone on the cell Mobile phone clip.



17.Complete assembly.

Work as a selfie stick Tripod stand can be used as a selfie stick.



Linking Method of Bluetooth Selfie Remote





No battery, No charging.

Please chose reputable brand, certificate compliant DC 5V adapter. It is better to choose a 12w or larger adaptor to power the ring light. If the adaptor power is smaller than 12w, it may happens over heating protection to cut off the ring light automatically.